

 FIRE SAFETY

AIR TREATMENT

FIRE DAMPERS

ETPL-3 FIRE DAMPER

» TECHNICAL DATA



DESCRIPTION, DIMENSIONS, PRODUCT CODE, PERFORMANCE

CHARACTERISTICS

Fire dampers marked CE certified EN 15650, EN 13501-3 classified and tested according to EN 1366-2. Installable on ventilation ducts ensure a rapid interruption of the air flow in case of fire. May be implemented with servo motor, electromagnet or manual reset thermal fuse.

CONSTRUCTION

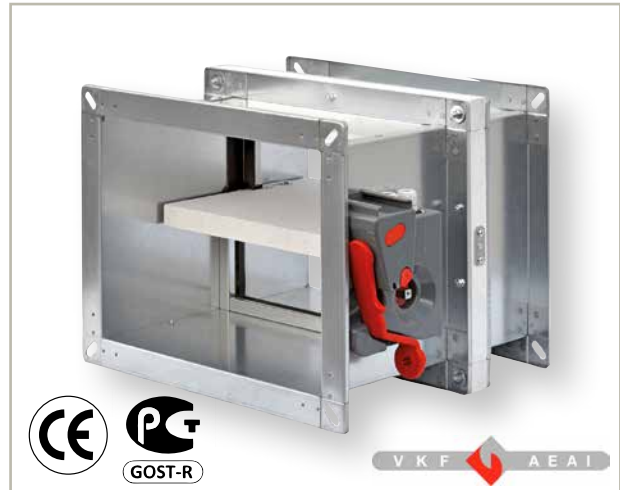
Double casing in thick galvanized steel with thermal cut intermediate in calcium silicate. Blade in calcium silicate moved on pivots steel rotation housed on brass bushings. Provided with outer flange for connection to ducts have thermal release device calibrated standard at 72°C.

FIRE CLASS

Fire class EI90, EI 120 S or EI 180 S.

OPERATING CONDITIONS

Clean air, maximum air speed 10 m/s.



PRODUCT CODE

Fire damper

ETPL-3-aaaabbb-c

Size of damper (aaaabbb) _____

Height (H), mm = 200 - 1500 in steps of 50 mm

Width (L), mm = 200 - 800 in steps of 50 mm

Version (c) _____

1 = Mechanical thermofuse, 72°C

2 = Motorized 24V with thermal sensor

3 = Motorized 230V with thermal sensor

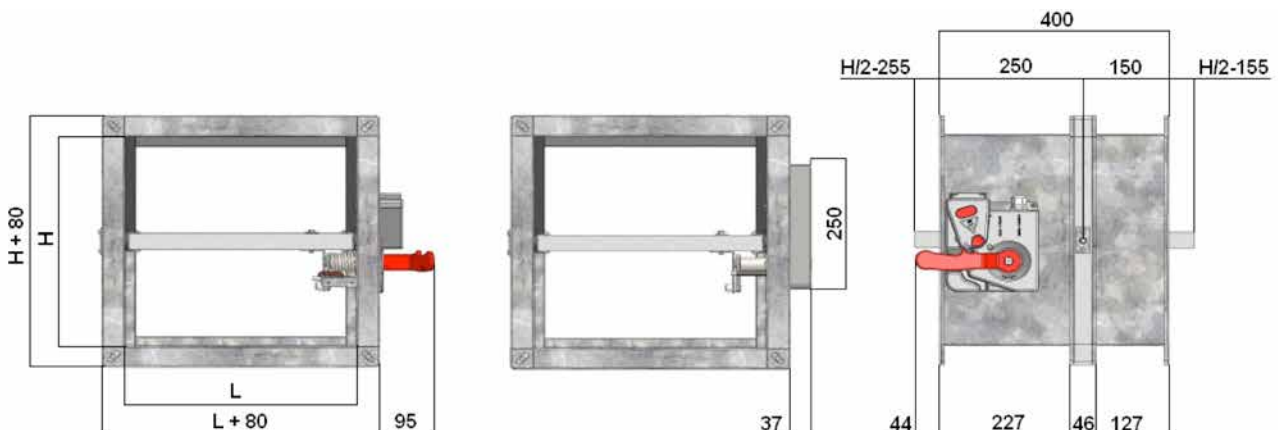
4 = Mechanical thermofuse with electromagnetic release impulse 24V

5 = Mechanical thermofuse with electromagnetic hold 24V

6 = Mechanical thermofuse with electromagnetic release impulse 230V

7 = Mechanical thermofuse with electromagnetic hold 230V

DIMENSIONS



WEIGHTS, PERFORMANCE

WEIGHTS (KG)

Dimensions in mm. Weights with mechanical thermofuse. Motorized versions +0,5 kg.

Height Width	200	250	300	350	400	450	500	550	600	6550	700	750	800	850
200	11,66	12,67	13,67	14,68	15,68	16,69	17,69	18,69	19,70	20,70	21,71	22,71	23,71	24,72
250	12,67	13,73	14,79	15,85	16,92	17,98	19,04	20,10	21,16	22,22	23,28	24,35	25,41	26,47
300	13,67	14,79	15,91	17,03	18,15	19,27	20,39	21,51	22,63	23,74	24,86	25,98	27,10	28,22
350	14,68	15,85	17,03	18,21	19,38	20,56	21,74	22,91	24,09	25,27	26,44	27,62	28,80	29,97
400	15,68	16,92	18,15	19,38	20,62	21,85	23,09	24,32	25,55	26,79	28,02	29,26	30,49	31,72
450	16,69	17,98	19,27	20,56	21,85	23,14	24,43	25,73	27,02	28,31	29,60	30,89	32,18	33,48
500	17,69	19,04	20,39	21,74	23,09	24,43	25,78	27,13	28,48	29,83	31,18	32,53	33,88	35,23
550	18,69	20,10	21,51	22,91	24,32	25,73	27,13	28,54	29,95	31,35	32,76	34,17	35,57	36,98
600	19,70	21,16	22,63	24,09	25,55	27,02	28,48	29,95	31,41	32,87	34,34	35,80	37,27	38,73
650	20,70	22,22	23,74	25,27	26,79	28,31	29,83	31,35	32,87	34,40	35,92	37,44	38,96	40,48
700	21,71	23,28	24,86	26,44	28,02	29,60	29,83	31,35	34,34	35,92	37,50	39,08	40,66	42,23
750	22,71	24,35	25,98	27,62	29,26	30,89	32,53	32,76	35,80	37,44	39,08	40,71	42,35	43,99
800	23,71	25,41	27,10	28,80	30,49	32,18	33,88	34,17	37,27	38,96	40,66	42,35	44,04	45,74

Height Width	900	950	1000	1050	1100	1150	1200	1250	1300	1350	1400	1450	1500
200	25,72	26,73	27,73	28,73	29,74	30,74	31,75	32,75	33,76	34,76	35,76	36,77	37,77
250	27,53	28,59	29,65	30,72	31,78	32,84	33,90	34,96	36,02	37,09	38,15	39,21	40,27
300	29,34	30,46	31,58	32,70	33,82	34,94	36,06	37,17	38,29	39,41	40,53	41,65	42,77
350	31,15	32,33	33,50	34,68	35,86	37,03	38,21	39,39	40,56	41,74	42,92	44,09	45,27
400	32,96	34,19	35,43	36,66	37,90	39,13	40,36	41,60	42,83	44,07	45,30	46,53	47,77
450	34,77	36,06	37,35	38,64	39,93	41,23	42,52	43,81	45,10	46,39	47,68	48,98	50,27
500	36,58	37,93	39,28	40,62	41,97	43,32	44,67	46,02	47,37	48,72	50,07	51,42	52,77
550	38,39	39,79	41,20	42,61	44,01	45,42	46,83	48,23	49,64	51,05	52,45	53,86	55,27
600	40,20	41,66	43,12	44,59	46,05	47,52	48,98	50,44	51,91	53,37	54,84	56,30	57,77
650	42,00	43,53	45,05	46,57	48,09	49,61	51,13	52,66	54,18	55,70	57,22	58,74	60,26
700	43,81	45,39	46,97	48,55	50,13	51,71	53,29	54,87	56,45	58,03	59,61	61,18	62,76
750	45,62	47,26	48,90	50,53	52,17	53,81	55,44	57,08	58,72	60,35	61,99	63,63	65,26
800	47,43	49,13	50,82	52,51	54,21	55,90	57,60	59,29	60,99	62,68	64,37	66,07	67,76

PERFORMANCE TABLE

Fire dampers tested according EN 1366-2 and classified according to EN 13501-3

Classification of resistance	Classification of resistance		
	EI 180 S - 300 Pa	EI 120 S - 300 Pa	EI 90 S - 300 Pa
Aerated concrete wall thickness 120 mm (ve i ↔ o)		from 200x200 to 1500x800 SR/M	from 200x200 to 1500x800 SR/M
Gypsum plasterboards type F wall thickness 125 mm (ve i ↔ o) need to use brackets kit ETPL-99-06		from 200x200 to 1200x800 SR/M	from 200x200 to 1200x800 SR/M
Reinforced concrete slab thickness 150 mm (ho i ↔ o) need to use brackets kit ETPL-99-05	from 200x200 to 1200x800 SR/M	from 200x200 to 1200x800 SR/M	from 200x200 to 1200x800 SR/M

DESIGNATIONS

- ve = vertical installation
- ho = horizontal installation
- i ↔ o = side exposed to fire indifferent
- Pa = testing pressure drop in Pascal
- E = integrity
- I = insulation
- S = smoke leakage
- M = manual reset device
- SR = device with servomotor

ACCESSORIES, MOTORS

Accessories for ETPL-3 with mechanical thermofuse, c = 1 or 4 - 7

Model	Code	Description
	ETPL-99-01	Mechanical thermofuse in copper 72°C. Spare parts fuse.
	ETPL-99-02	Mechanical thermofuse in copper 95°C. Spare parts fuse.
	ETPL-3-aaaabbb-4	Electromagnet, main voltage 24V DC normally not excited. Factory fitted accessory.
	ETPL-3-aaaabbb-5	Electromagnet, main voltage 24V DC normally excited. Factory fitted accessory.
	ETPL-3-aaaabbb-6	Electromagnet, main voltage 220V AC normally not excited. Factory fitted accessory.
	ETPL-3-aaaabbb-7	Electromagnet, main voltage 220V AC normally excited. Factory fitted accessory.
	ETPL-99-04	Electric micro switch to signal damper "closed" or "open"
	ETPL-00-05	Brackets kit ceiling installation (4 pcs)
	ETPL-99-06	Brackets kit light wall installation (4 pcs)

Motors for ETPL-3 with servo motor, c = 2 or 3

BFN...-T/ST with thermofuse BAT



Code	Voltage	Command
BFN24-T	24V	On-Off
BFN24-T-ST	24V	On-Off
BFN230-T	230V	On-Off

Note:

- all the BFN have two limit switch signal contacts
- the BFN...-ST version have a prewired plug for SBS control systems

BF...-T/ST with thermofuse BAT



Codice / Code	Voltage	Command
BF24-T	24V	On-Off
BF24-T-ST	24V	On-Off
BF230-T	230V	On-Off

Note:

- all the BF have two limit switch signal contacts
- the BF...-ST version have a prewired plug for SBS control systems

Accessories for ETPL-3 with servo motor, c = 2 or 3

Model	Code	Description
	BKN230-24	Supply and communications unit to be installed on the fire damper. Joined to the electric board by a 2-pole line.
	BKS24-1B	Control and communications unit for 1 damper to be installed on panel. Joined to the BKNM by a 2 pole line.
	BKS24-9A	Control and communications unit for groups of up to nine dampers, to be installed on Panel. Connected to each BKN by a 2-pole line.

WE BRING BETTER AIR™ TO LIFE

With over a century of innovation and expertise to share with our customers, Flakt Woods is a global leader in Air Technology products and solutions. We specialize in the design and manufacturing of a wide range of products and solutions for Air Movement, Air Treatment, Air Distribution, Air Management and Air Diffusion with focus on two major benefits – **Air Comfort** and **Fire Safety**. With market presence in 65 countries we are in a unique position to be a local supplier and an international partner in our customer's projects.

Our product brands such as SEMCO®, eQ®, eQ Prime®, JM Aerofoil®, Econet®, Veloduct®, Optivent®, Optimix®, Econovent® and Clean-vent® are well-known and trusted by customers all over the world to deliver high quality and energy efficient solutions.

Flakt Woods Spa

Viale della Repubblica, 81/A - 20835 Muggiò MB, ITALY
+39 039 9360270
www.flaktwoods.it

» To learn more about our offering and get in contact with your nearest sales representative please visit www.flaktwoods.com

WWW.FLAKTWOODS.COM

ETPL-3 | 9885GB | 20160302